



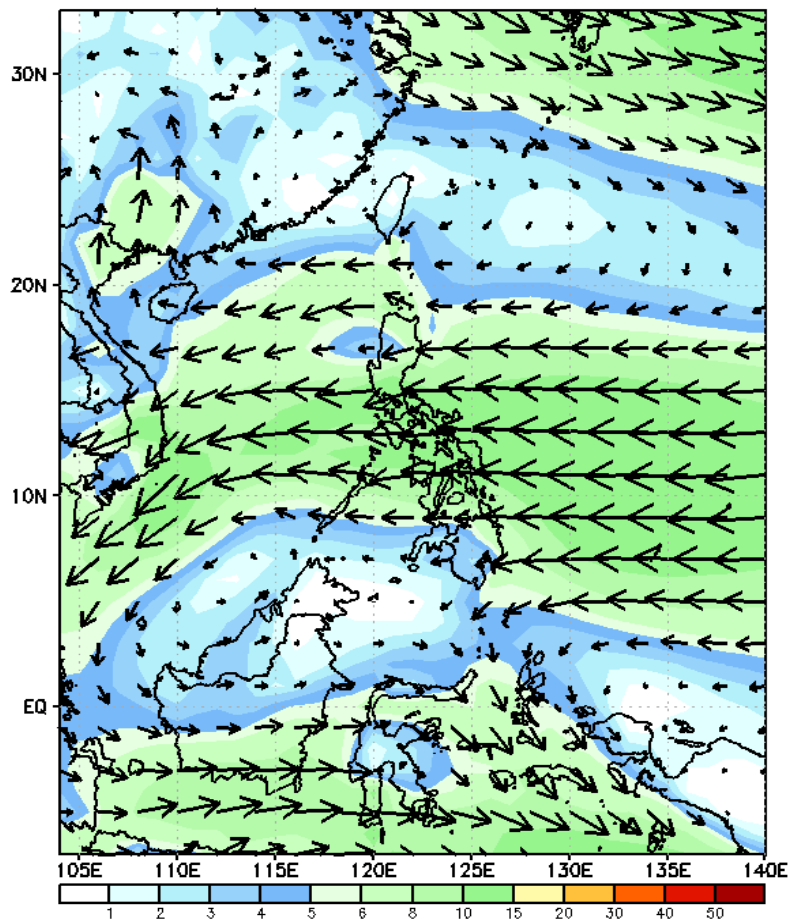
Week 1 & Week 2 Forecast for the Philippines using GEFS Model



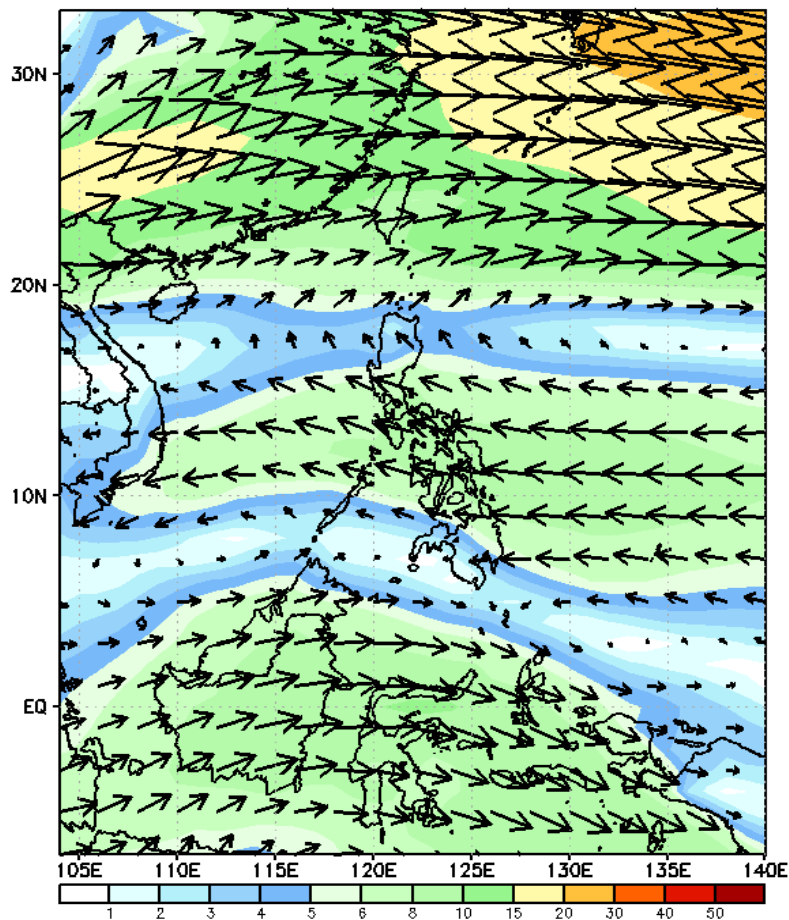
GEFS Week-1 Wind Forecasts:

Week 1: Feb 07-13, 2025

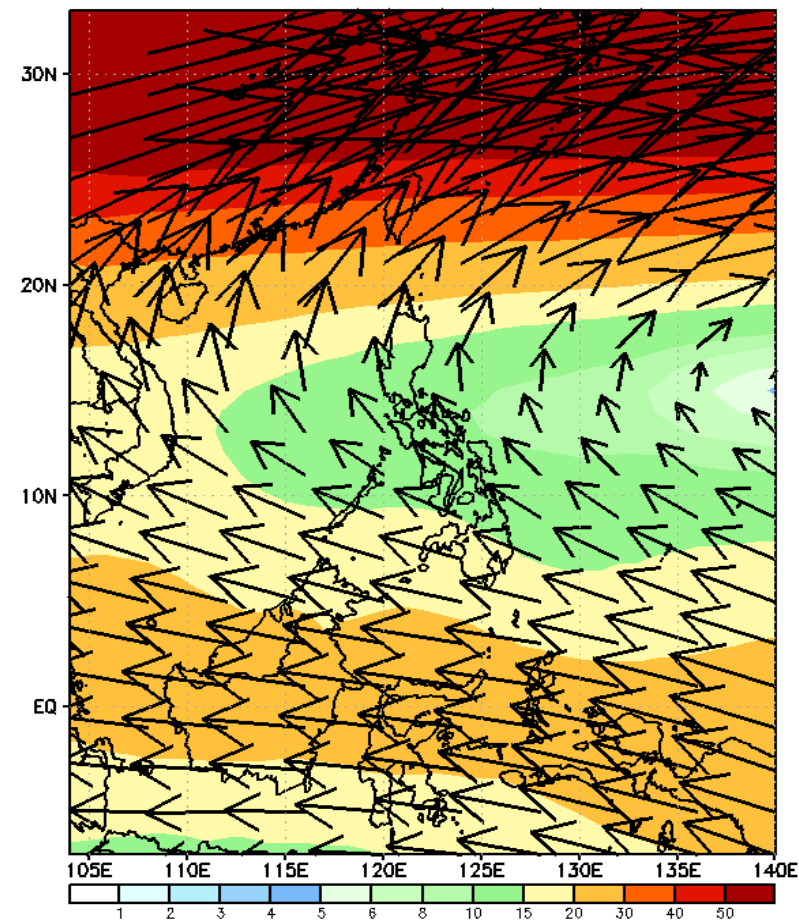
GEFS Week-1 850-hPa Wind Total
Valid: 20250207 - 20250213



GEFS Week-1 700-hPa Wind Total
Valid: 20250207 - 20250213

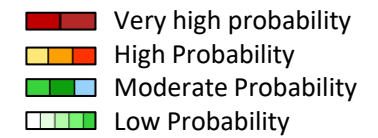


GEFS Week-1 200-hPa Wind Total
Valid: 20250207 - 20250213



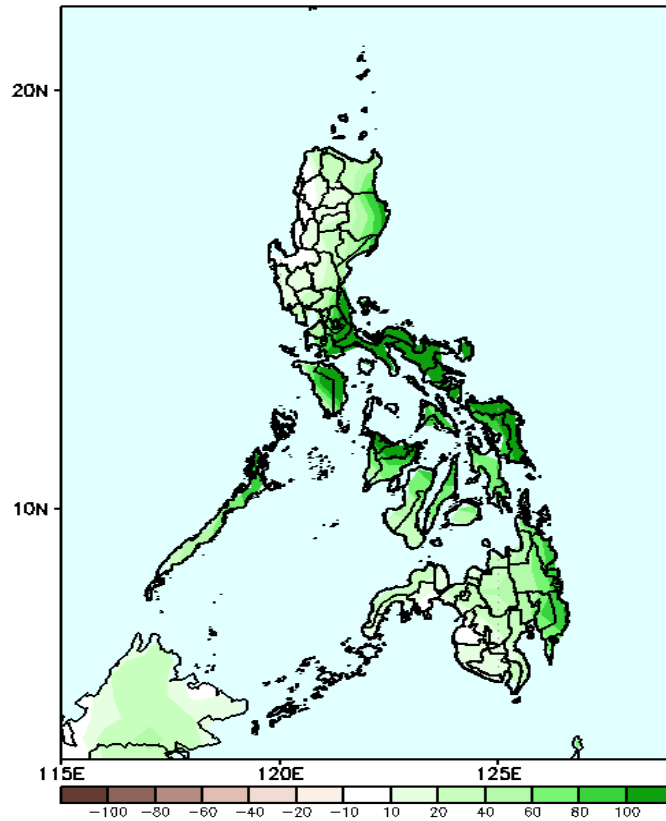
Northeast Monsoon affecting Extreme Northern Luzon while Easterlies affecting the rest of the country during the forecast period

Precipitation Anomaly and Exceedance Probability > 25/50 mm



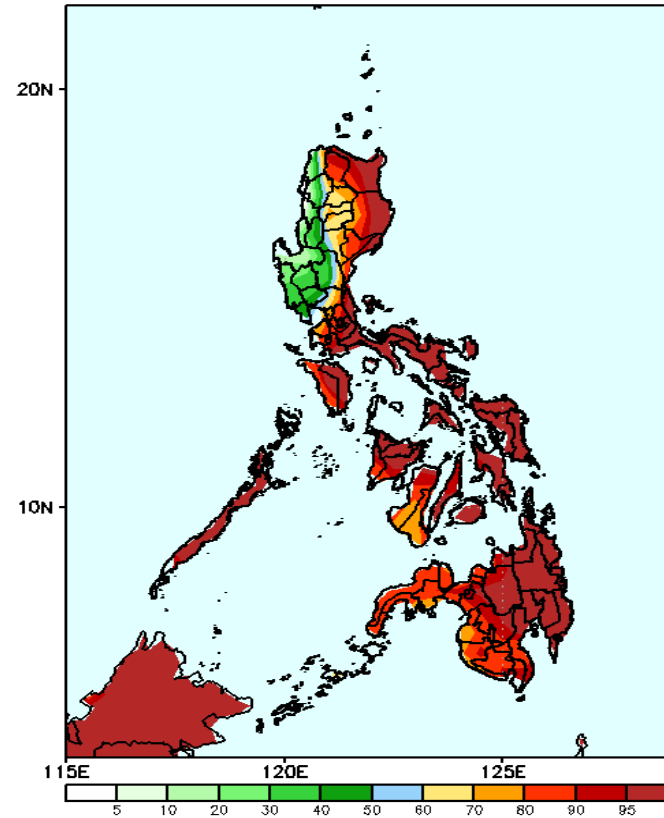
Week 1: Feb 07-13, 2025

GEFS Week-1 Precip Anomaly
Valid: 20250207 - 20250213



Increase of rainfall of 60-100mm is expected across the country

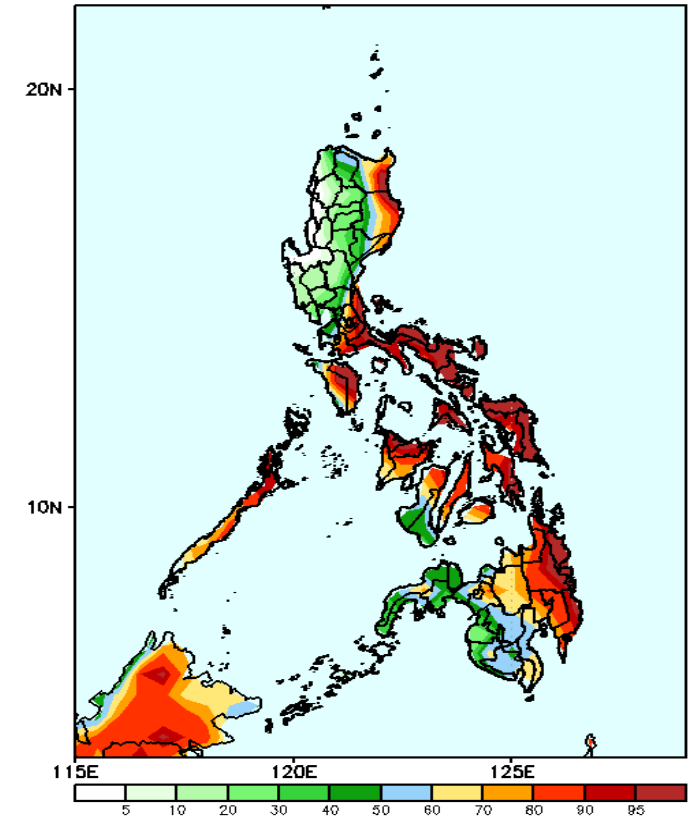
GEFS Week-1 Exceedance Prob. > 25mm
Valid: 20250207 - 20250213



Probability to Exceed 25mm

- High to very high over Batanes, Apayao, most of Eastern and Southern Luzon, Visayas and Mindanao;
- Moderate to high over the rest of Luzon;

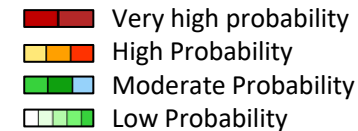
GEFS Week-1 Exceedance Prob. > 50mm
Valid: 20250207 - 20250213



Probability to Exceed 50mm

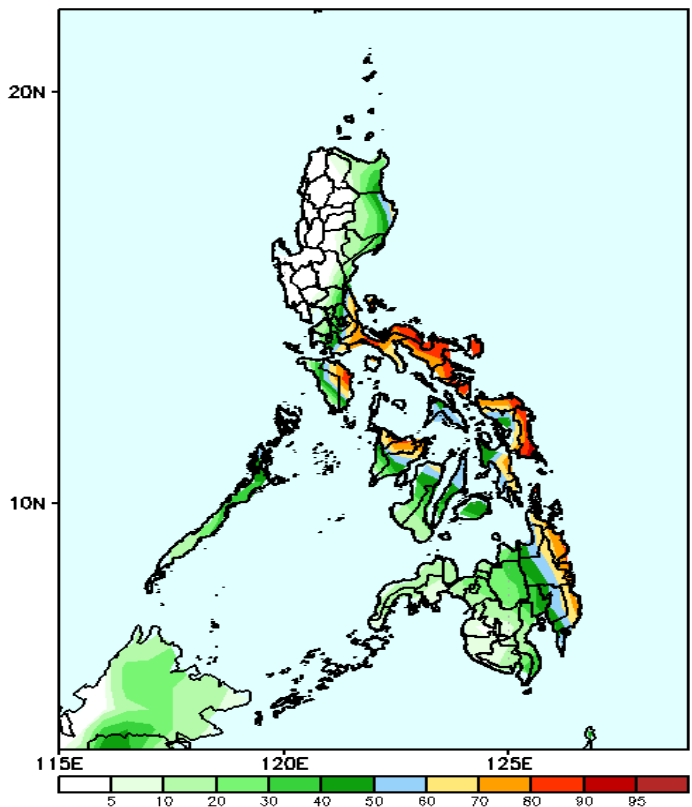
- High to very high over the eastern part of Cagayan and Isabela, Quezon, Bicol Region, Panay Island, Eastern Visayas, and Eastern Mindanao;
- Moderate to high chance over Batanes, the rest of Cagayan and Isabela, the northern part of Apayao, Aurora, Bulacan, NCR, the rest of Southern Luzon, and the rest of Visayas and Mindanao;
- Low to moderate over the rest of Luzon

Exceedance Probability > 100/150/200 mm



Week 1: Feb 07-13, 2025

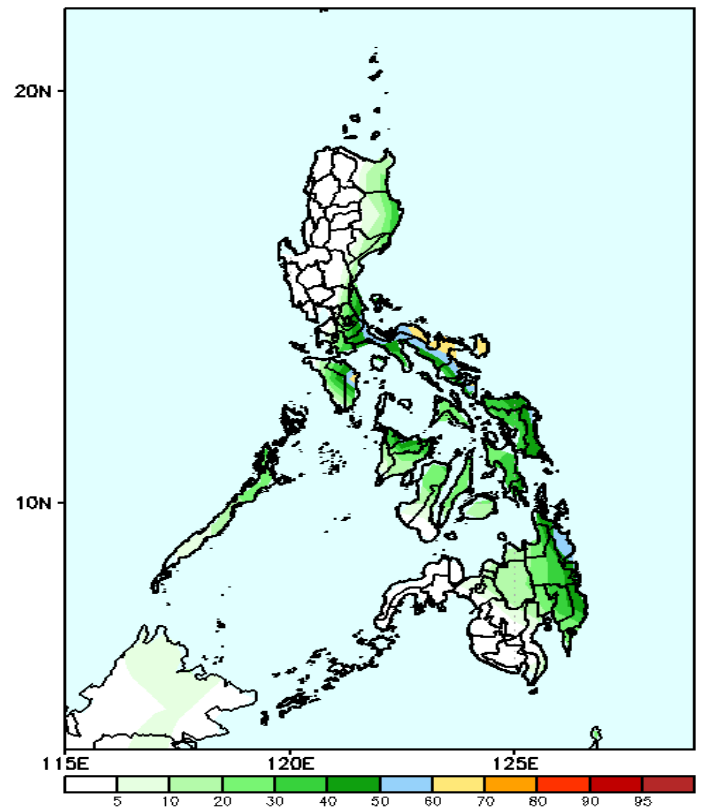
GEFS Week-1 Exceedance Prob. > 100mm
Valid: 20250207 - 20250213



Probability to Exceed 100mm

- Moderate to high over the easternmost part of Isabela, Quezon, Rizal, Laguna, Bicol Region, most of Mindoro Provinces, eastern part of Panay, northern part of Negros Occidental, and Eastern Mindanao;
- Low to moderate over the rest of Southern Luzon, Visayas, and Mindanao;
- Low over the rest of Luzon.

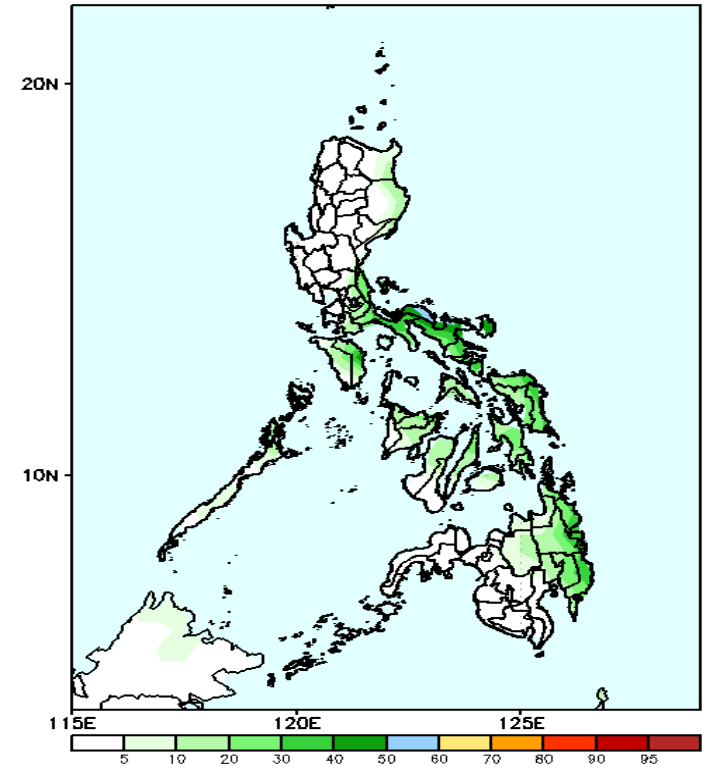
GEFS Week-1 Exceedance Prob. > 150mm
Valid: 20250207 - 20250213



Probability to Exceed 150mm

- Moderate to high over Quezon, Bicol Region and Samar Provinces;
- Low to moderate over the rest of Southern Luzon, Visayas and Mindanao;
- Low over the rest of Luzon;

GEFS Week-1 Exceedance Prob. > 200mm
Valid: 20250207 - 20250213



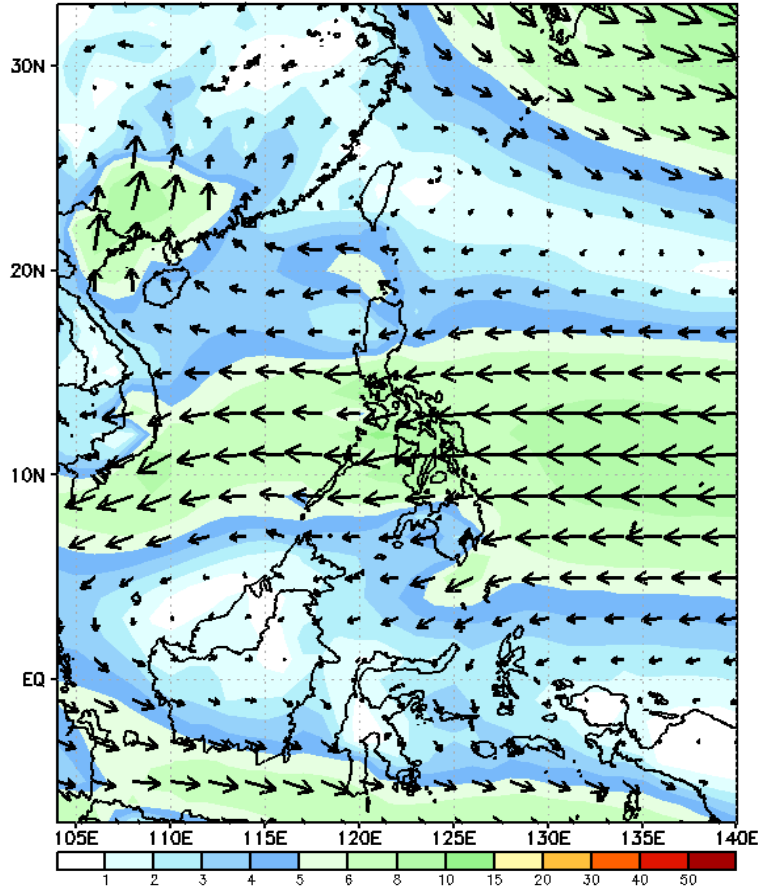
Probability to Exceed 200mm

- Low to moderate over Quezon, Bicol Region and Samar Province and the eastern sections of Visayas and Mindanao;
- Low over the rest of the country

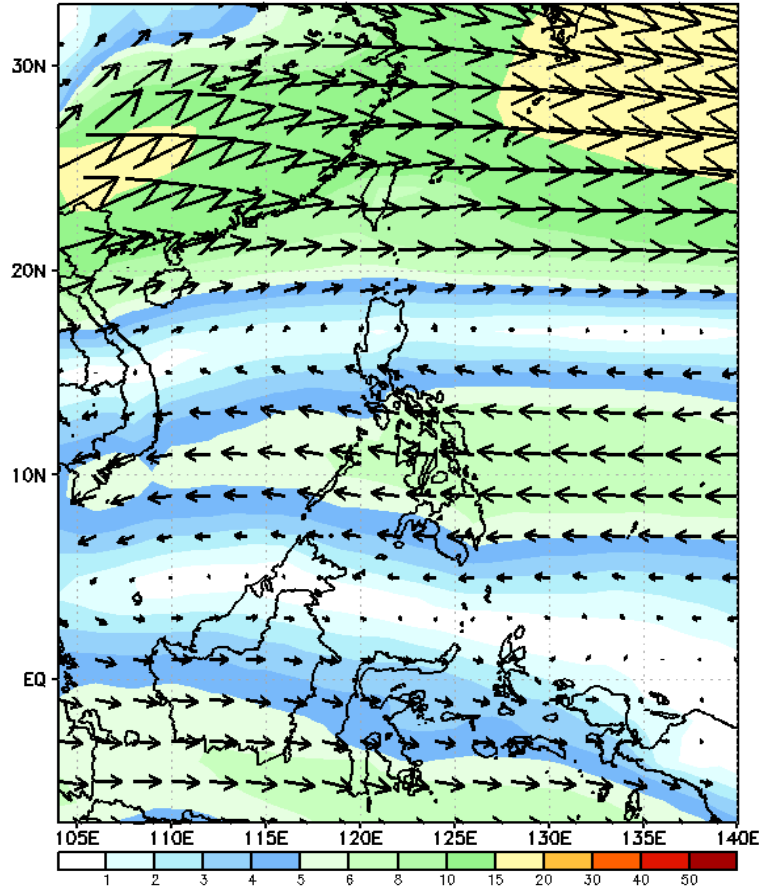
GEFS Week-2 Wind Forecasts:

Week 2: Feb 14-20, 2025

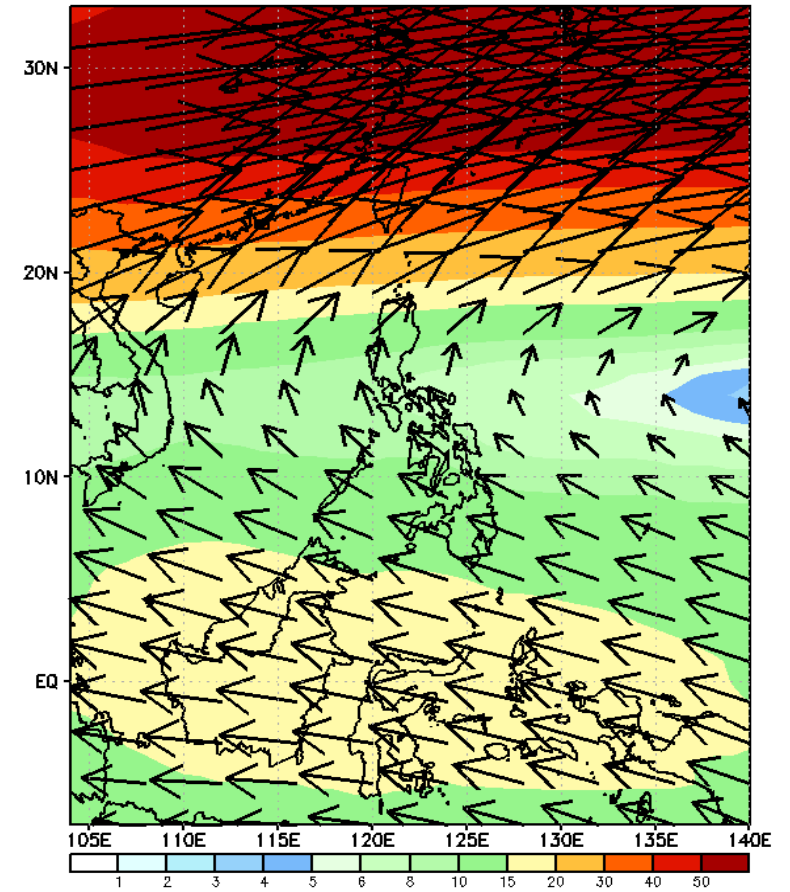
GEFS Week-2 850-hPa Wind Total
Valid: 20250214 - 20250220



GEFS Week-2 700-hPa Wind Total
Valid: 20250214 - 20250220

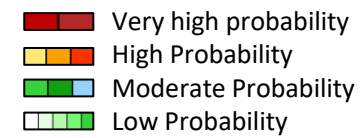


GEFS Week-2 200-hPa Wind Total
Valid: 20250214 - 20250220



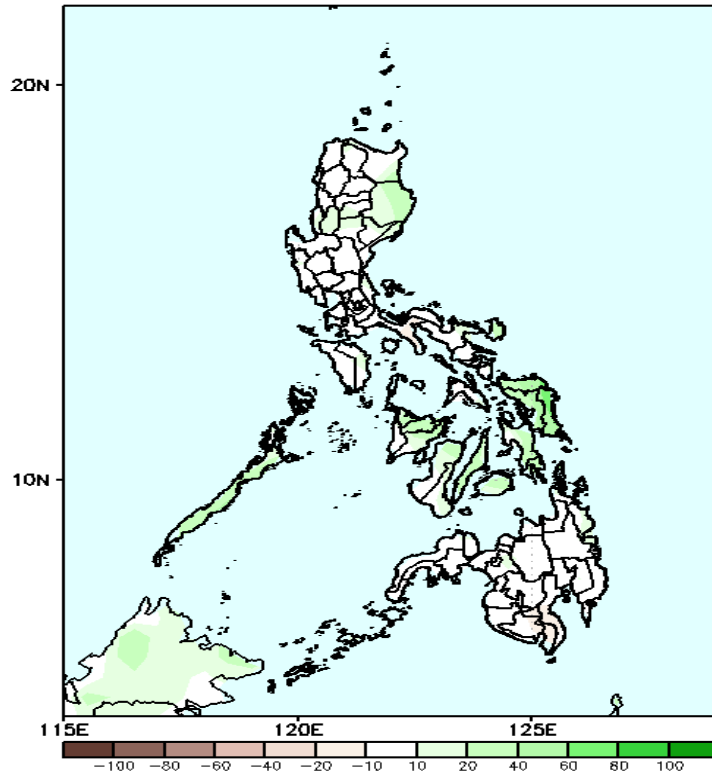
Northeast Monsoon affecting Northern Luzon while Easterlies affecting the rest of the country during the forecast period

Precipitation Anomaly and Exceedance Probability > 25/50 mm



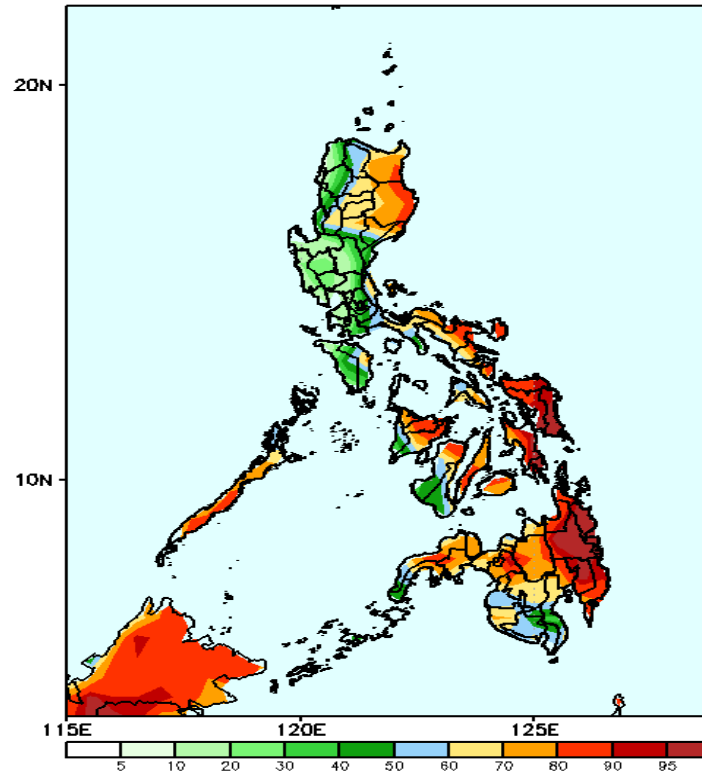
Week 2: Feb 14-20, 2025

GEFS Week-2 Precip Anomaly
Valid: 20250214 - 20250220



Increase of rainfall of 10-40mm is expected over the eastern part of Luzon and most of Visayas.

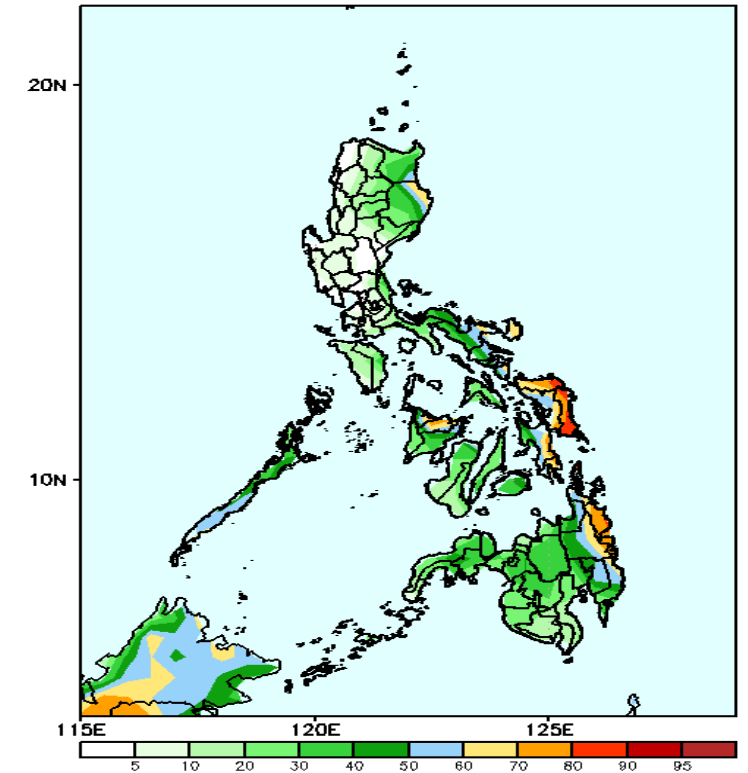
GEFS Week-2 Exceedance Prob. > 25mm
Valid: 20250214 - 20250220



Probability to Exceed 25mm

- High to very high over Eastern Luzon and Eastern Visayas;
- Moderate to high over CAR, Cagayan Valley Region, Quezon, Bicol Region, Oriental Mindoro, Palawan and the rest of Visayas and Mindanao.

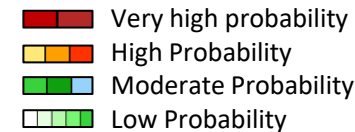
GEFS Week-2 Exceedance Prob. > 50mm
Valid: 20250214 - 20250220



Probability to Exceed 50mm

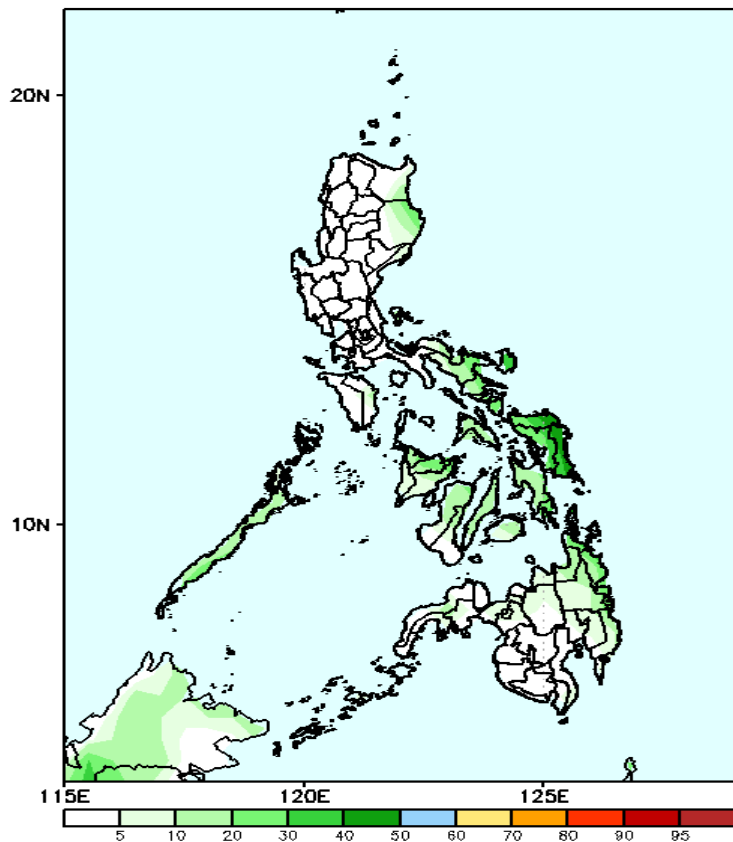
- Moderate to high over the southeastern part of Cagayan, northeastern part of Isabela, Bicol Region, northern part of Panay, Eastern Visayas and Eastern Mindanao;
- Low to moderate over the rest of the country.

Exceedance Probability > 100/150/200 mm



Week 2: Feb 14-20, 2025

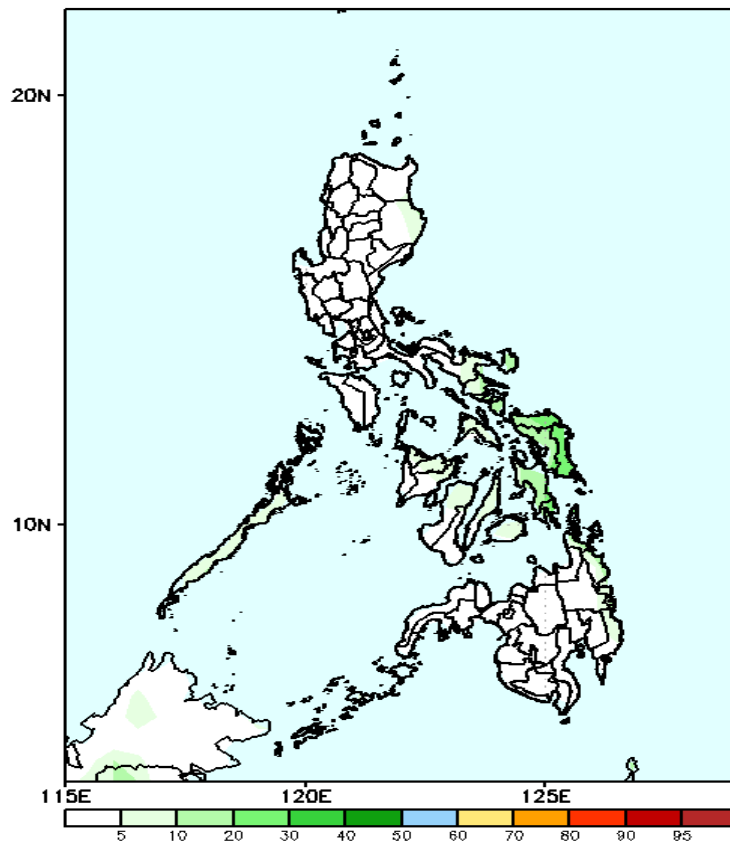
GEFS Week-2 Exceedance Prob. > 100mm
Valid: 20250214 - 20250220



Probability to Exceed 100mm

- Moderate over Samar Provinces;
- Low to moderate over the rest of the country.

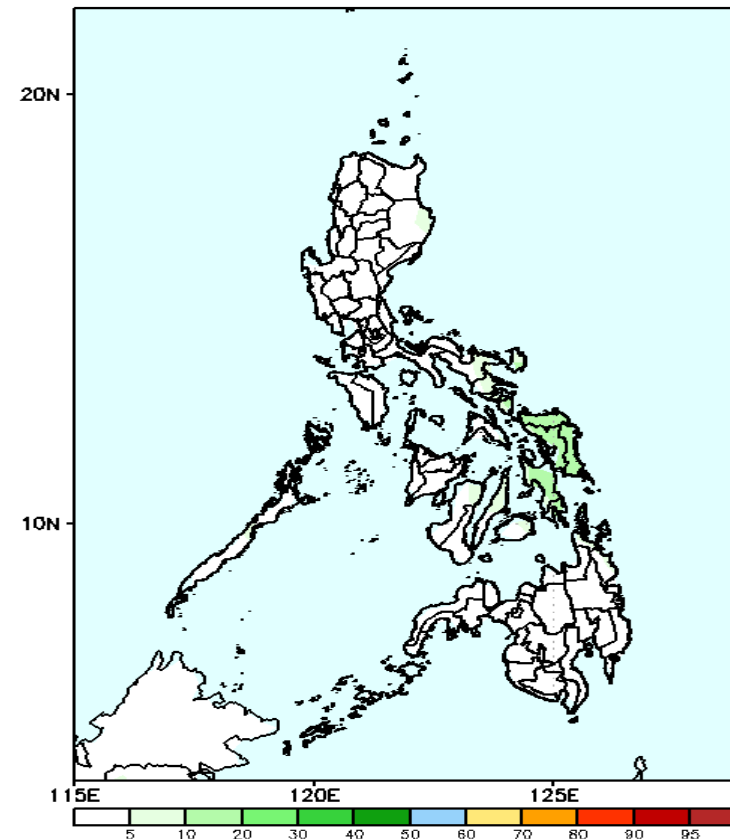
GEFS Week-2 Exceedance Prob. > 150mm
Valid: 20250214 - 20250220



Probability to Exceed 150mm

- Low across the country.

GEFS Week-2 Exceedance Prob. > 200mm
Valid: 20250214 - 20250220

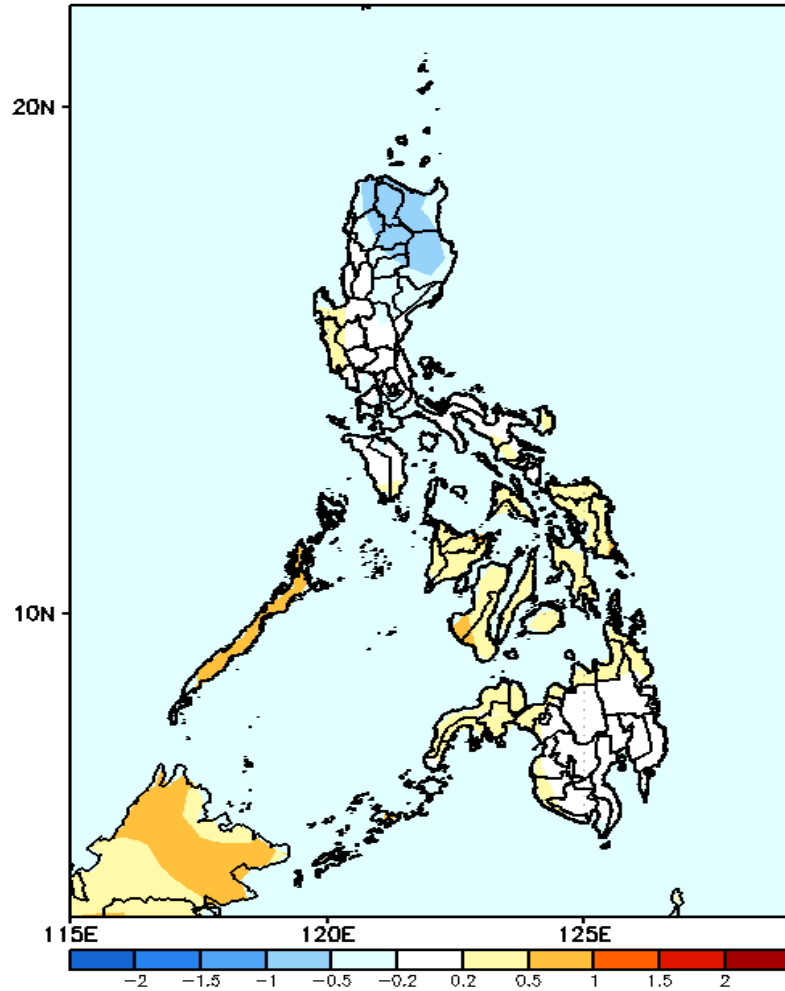


Probability to Exceed 200mm

- Low across the country.

GEFS Week-1 & 2 Forecasts: T2m Anomaly

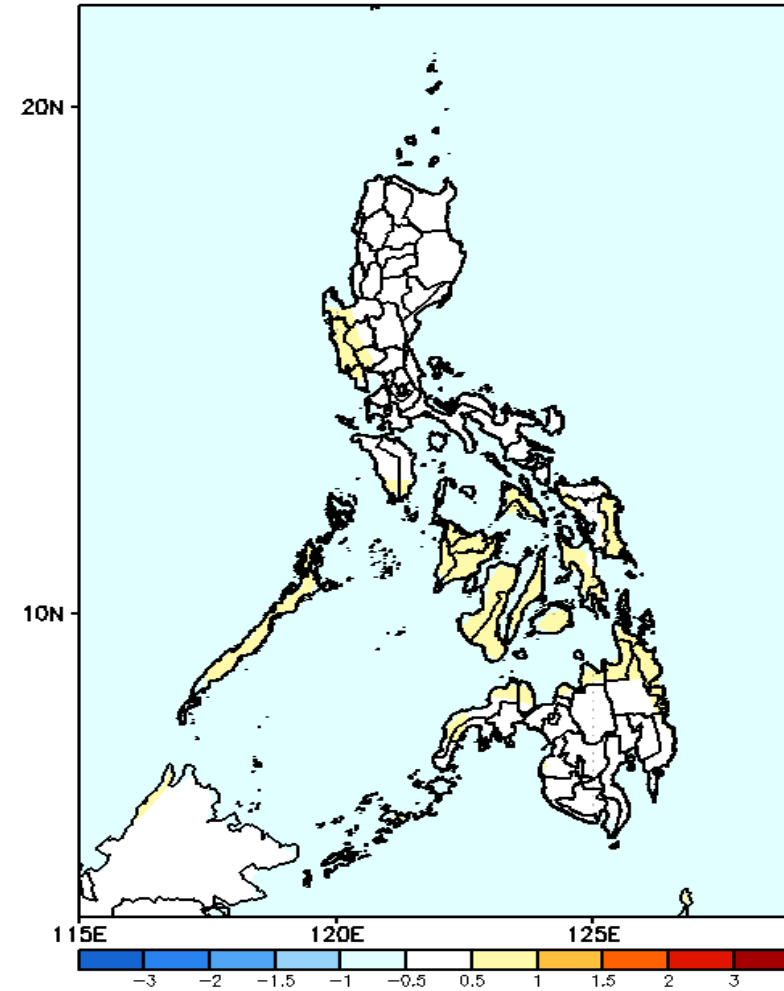
GEFS Week-1 T2m Anomaly
Valid: 20250207 - 20250213



2m Temperature Week 1: Feb 07-13, 2025

Near to slightly cooler than average surface air temperature will likely be experienced over most parts of Northern Luzon while near to slightly warmer than average temperature is expected for the rest of the country.

GEFS Week-2 T2m Anomaly
Valid: 20250214 - 20250220



2m Temperature Week 2: Feb 14-20, 2025

Near to slightly warmer than average surface air temperature will likely be experienced in most parts of the country.